

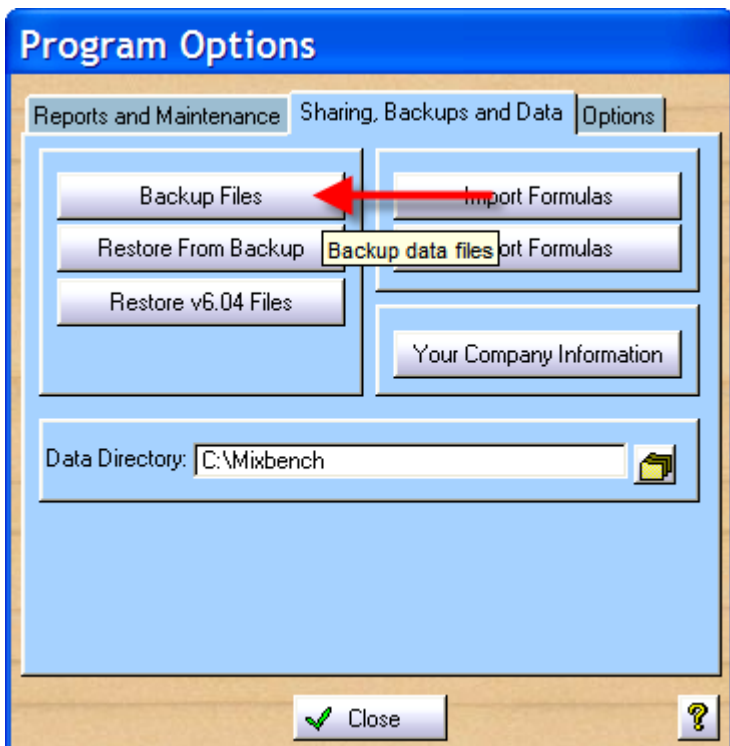
How to Convert The Mixing Bench 6.52x to Version 8.3.x

Your version of The Mixing Bench is far behind the current version.

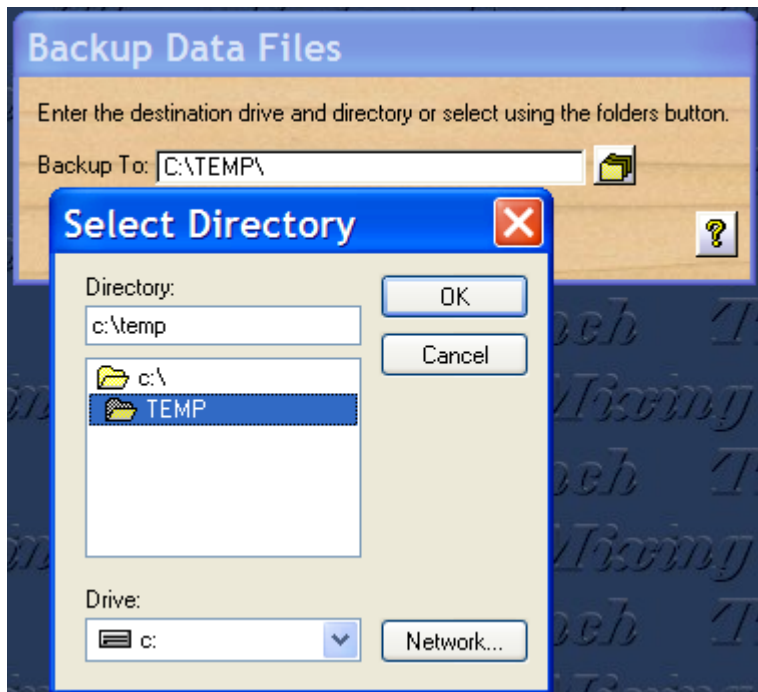
The following steps are the quickest way to upgrade without having to download and install all the older versions in order. Please have a knowledgeable computer person available to help complete these steps.

It is essential that you have a good backup using The Mixing Bench program. The conversion cannot be accomplished without it. The first steps explain how to perform a backup.

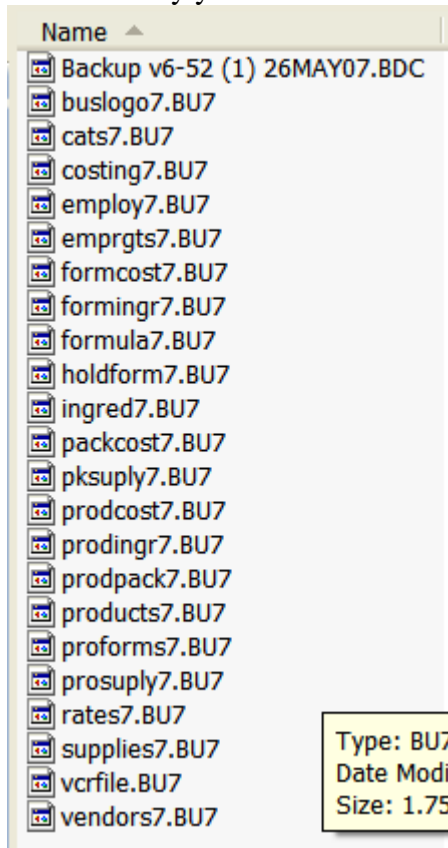
- Start The Mixing Bench version 6.52x.
- Open Program Options.
- Go to the Sharing, Backups and Data tab.
- Click Backup Files.



- Select the backup drive and directory using the folders button to the right of the field.



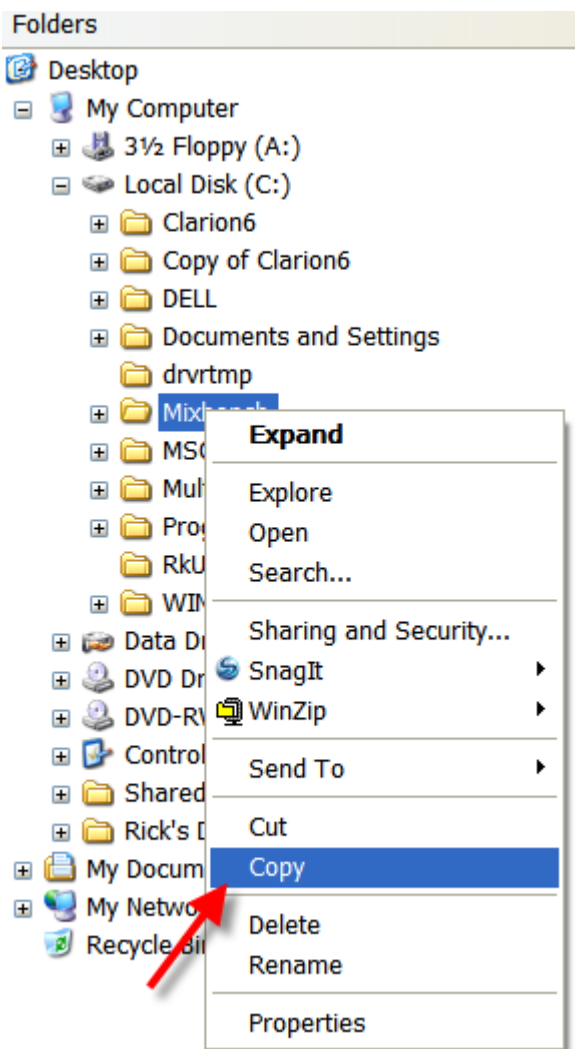
- Click the Backup button. The files should backup to the drive and directory selected. The files are as listed below. Verify you have these files and Do Not delete any. (the date will be different.)



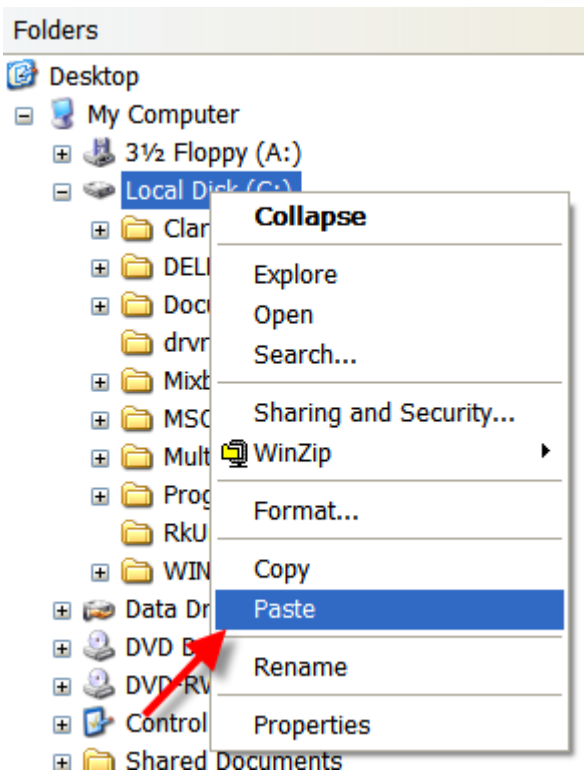
NOTE:

In the following steps you will copy the mixbench directory, uninstall the old program, delete the old program folder, copy files between folders, install the new program and convert the data files. **If you are not comfortable doing this or have no idea what we're talking about, DO NOT CONTINUE and get some help.**

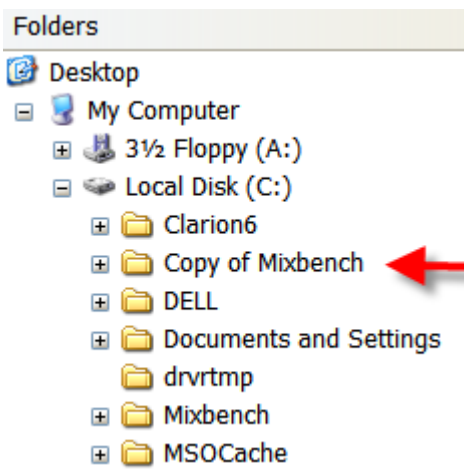
- Open Windows Explorer (not the internet) Click Start, Run, and type “explorer.exe” and click OK.
- Expand “My Computer” by clicking the “+” at the left.
- Expand “Local Disk (C:)”
- Right click on the “Mixbench” directory and select Copy



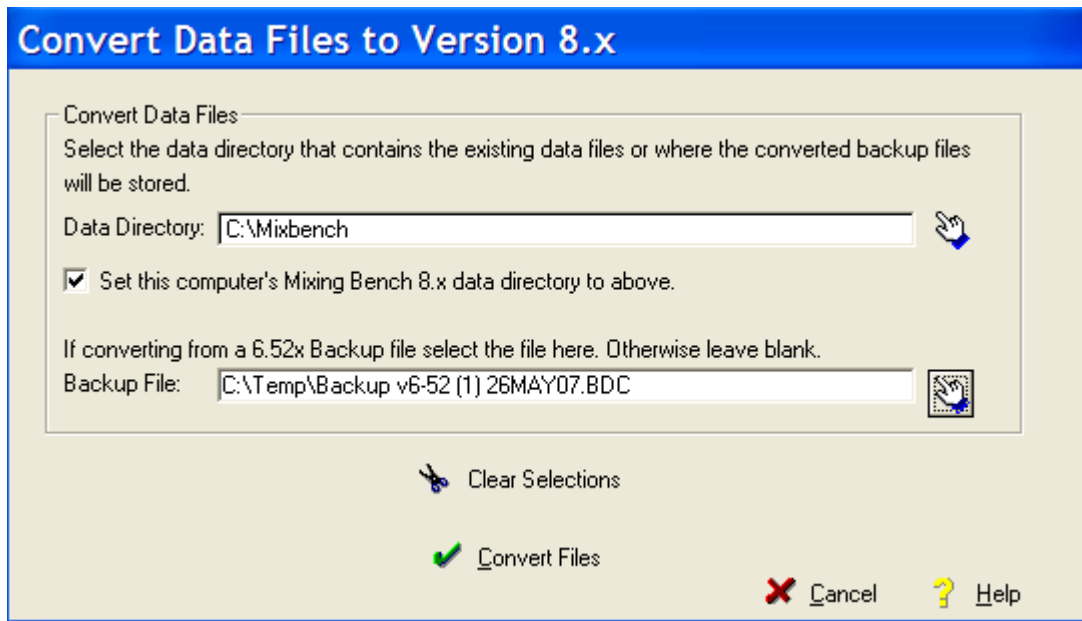
- Right click on “Local Disk (C:)” and select Paste



- A new directory will be created called “Copy of Mixbench”.



- Open the Control Panel (Start, Run, type in “control”)
- Select Add or Remove Programs.
- Scroll down the list until you find The Mixing Bench.
- Click on The Mixing Bench and remove all instances.
- Close the Control Panel.
- Go back to Windows Explorer.
- Right click the “Mixbench” directory and select Delete.
- Go to <http://www.themixingbench.com>. Download and install version 8.3.x.
- Go back to Windows Explorer. Select View, Refresh (at the top of the window)
- Left click the directory “Copy of Mixbench”.
- In the right side pane, right click on the file “DSSW2.tps” and select Copy. (the “.tps” part may not be visible)
- Right click the new “Mixbench” directory and select Paste. Answer Yes to overwrite.
- Click Start, Run and type in “c:\mixbench\Cnv65_80.exe”. This is the data file conversion program.



- The Data Directory is where your converted files will be stored. This is normally “C:\Mixbench”.
- Check “Set this computer’s Mixing Bench 8.x data directory to above.”
- Enter the backup file you created earlier by selecting the file name from the backup directory.
- Click the Convert Files button and answer Yes to allow the conversion to proceed.
- Close all open screens and programs.
- Open The Mixing Bench version 8.3.x.
- Verify your data.