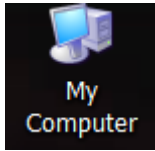


The Mixing Bench 8.x Backup Step By Step on XP.









- Close The Mixing Bench program.
- Remove the Jump drive (memory stick) if it's installed.
- Open My Computer.



- Make a note of all the drive letters that are present.

Name	Type
Files Stored on This Computer	
Shared Documents	File Folder
Rick's Documents	File Folder
Hard Disk Drives	
Local Disk (C:)	Local Disk
Data Drive (D:)	Local Disk
Devices with Removable Storage	
3½ Floppy (A:)	3½-Inch Floppy Disk
DVD Drive (R:)	CD Drive
DVD-RW Drive (S:)	CD Drive

- Insert the Jump Drive and let the computer recognize it.
- Find and remember the new drive letter assigned to the Jump drive.

Name	Type
Files Stored on This Computer	
 Shared Documents	File Folder
 Rick's Documents	File Folder
Hard Disk Drives	
 Local Disk (C:)	Local Disk
 Data Drive (D:)	Local Disk
Devices with Removable Storage	
 3½ Floppy (A:)	3½-Inch Floppy Disk
 DVD Drive (R:)	CD Drive
 DVD-RW Drive (S:)	CD Drive
 JUMP_DRIVE (J:)	Removable Disk

If a new drive letter does NOT appear the most likely reason is Windows has assigned the jump drive a letter that is already used by the network or some other device on your computer. You will have to use the Computer Management console to fix the problem.

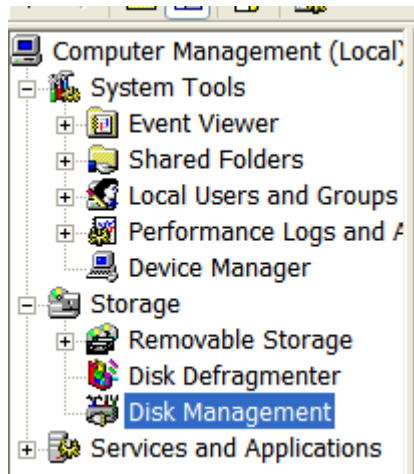
Complete the following only if the Jump drive does not appear. Change only the drive letter for the Jump drive. Leave the other drives alone.!

Click the Start Button and select Run.

Type in "compmgmt.msc" without the quotes.

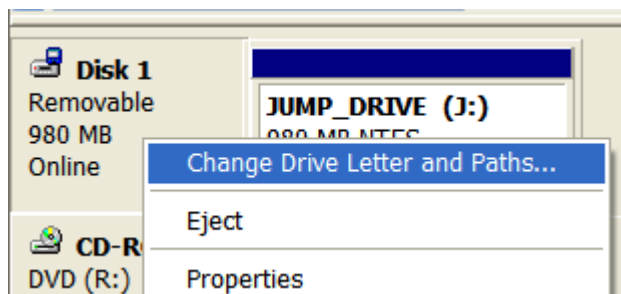
Click Ok.

The console will open.

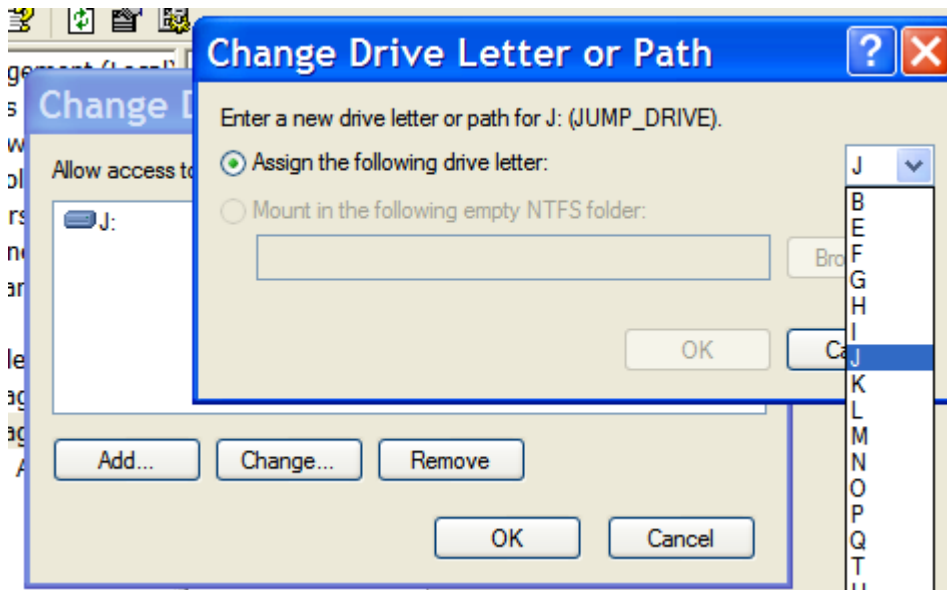


Expand the Storage section and click Disk Management.

On the right side of the console find the jump drive.



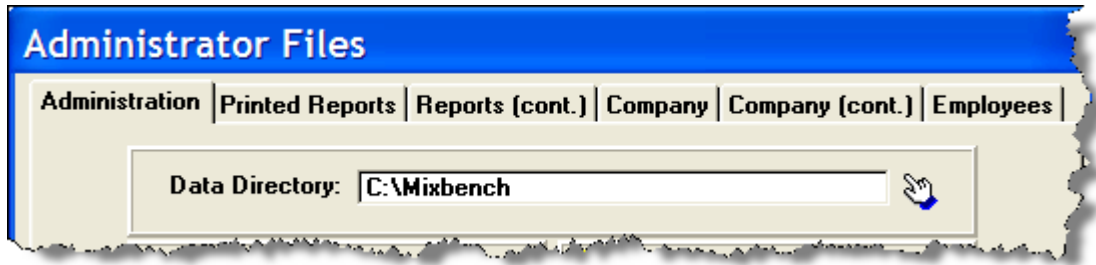
Right click the drive and select Change Drive Letter and Path.



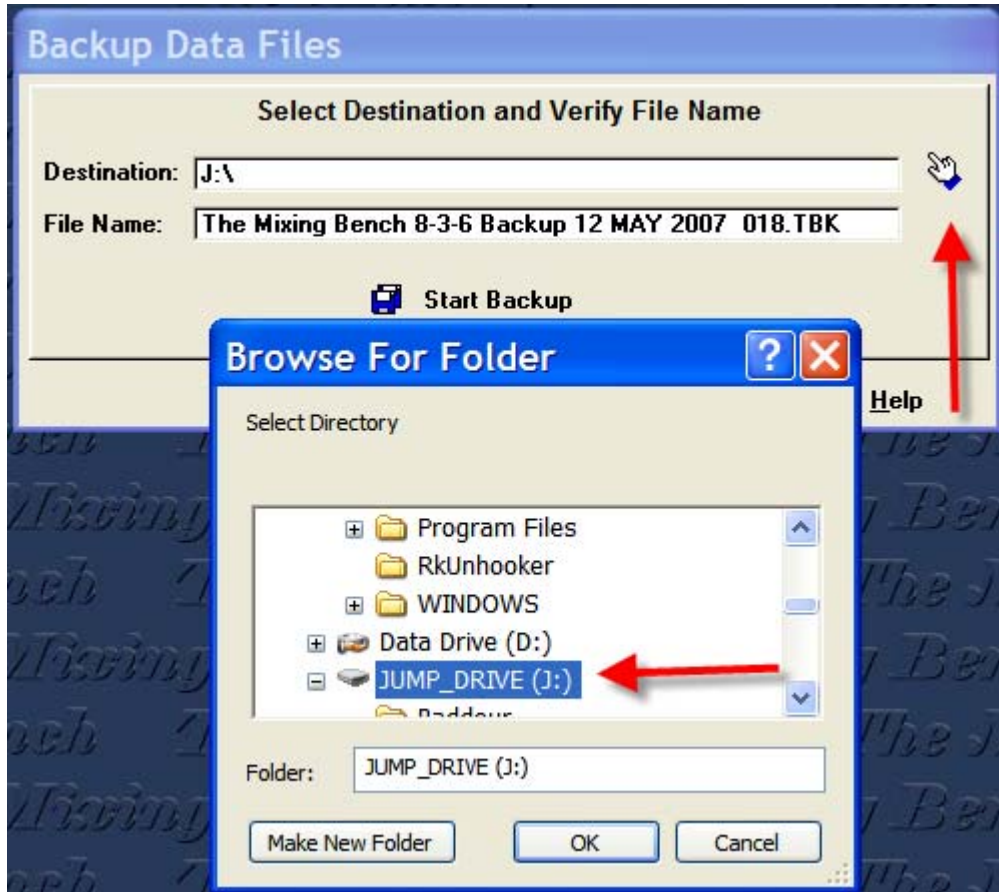
Change the drive letter to one that is not already used.

Click Ok and OK. Close all the screens and go back to the Desktop.

- Start The Mixing Bench.
- Go to Administrator Files.



- Take note of the Data Directory.
- Click the Backup Data Files button.



- Change the Destination to the Jump drive by clicking the hand to the right of the field and selecting the Jump drive from the list. The Destination should not be the same as the Data Directory.
- Click the Start Backup button.